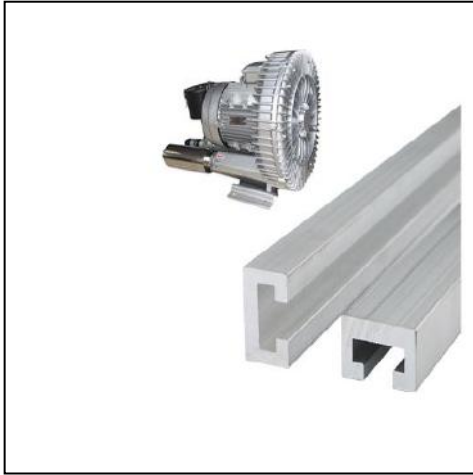


JINAN HONGYANG CNC MACHINERY CO., LTD

CNC Router Table Parts



CNC router table parts consist of aluminum profile tables and vacuum adsorption tables.

The aluminum profile table is generally cut to the required size for tiling. Commonly used aluminum profiles are 28mm wide, 80mm wide, 100mm wide, and 125mm wide. As a professional CNC parts manufacturer, HYCNC also sells table parts of 115mm, 120mm, and 160mm.

The vacuum adsorption table is typically used for processing PVC plates. By installing flange joints and connecting them with a vacuum pump through the pipeline, the vacuum absorption table can fix the plate to be processed by vacuum principle.

The Types of CNC Router Table Parts For Sale





125mm CNC Table Aluminum Materials



160mm CNC Table Aluminum Materials



Air Cooling CNC Vacuum Pump



Water Cooling CNC Vacuum Pump